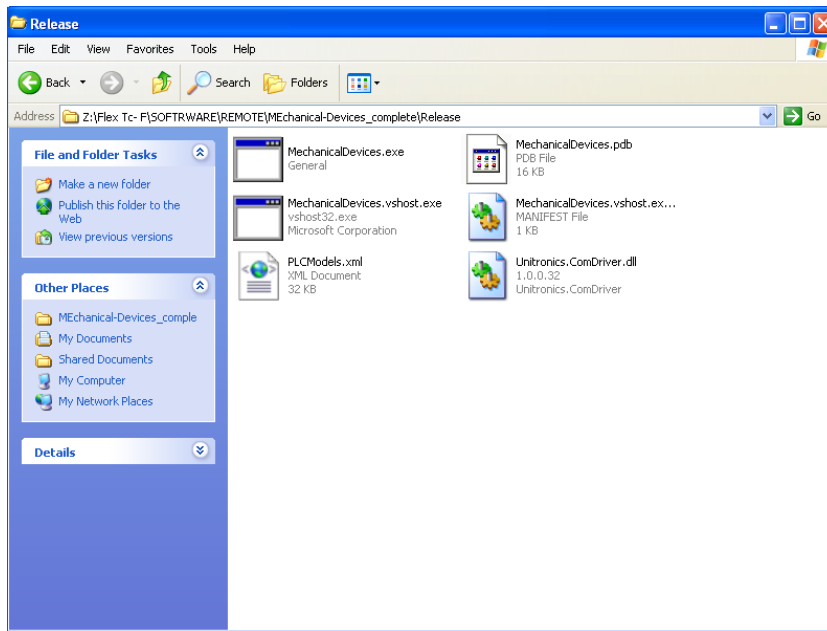


Remote TCP/IP communication with the FLEXTC pointing compiled EXE file:

- 1) Download and install Microsoft .net framework 4.0 .  
Use the following link:  
<http://www.microsoft.com/en-us/download/details.aspx?id=17851>
- 2) Extract the Release.zip file.  
Unzip it to a local hard drive computer.



- 3) Make sure you have all the following unzipped files:
  - a) MechanicalDevices.exe
  - b) MechanicalDevices.pdb
  - c) MechanicalDevices.vshost.exe
  - d) Unitronics.ComDriver.dll
  - e) MechanicalDevices.vshost.exe.manifest



- 4) Turn on the FLEXTC unit. Make sure you connect the Ethernet cable from your network server / or /personal computer to the FlexTC.
- 5) If you use direct Ethernet connection from the desktop to the FlexTC, you need to change the computer network connection.

For WIN XP do the following changes:

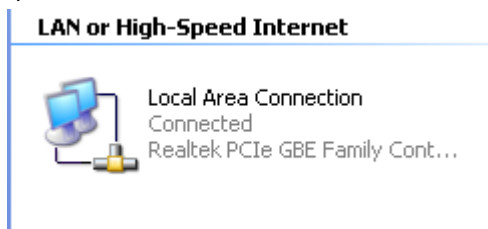
a) Go to "My computer" and press the "Control Panel" icon.



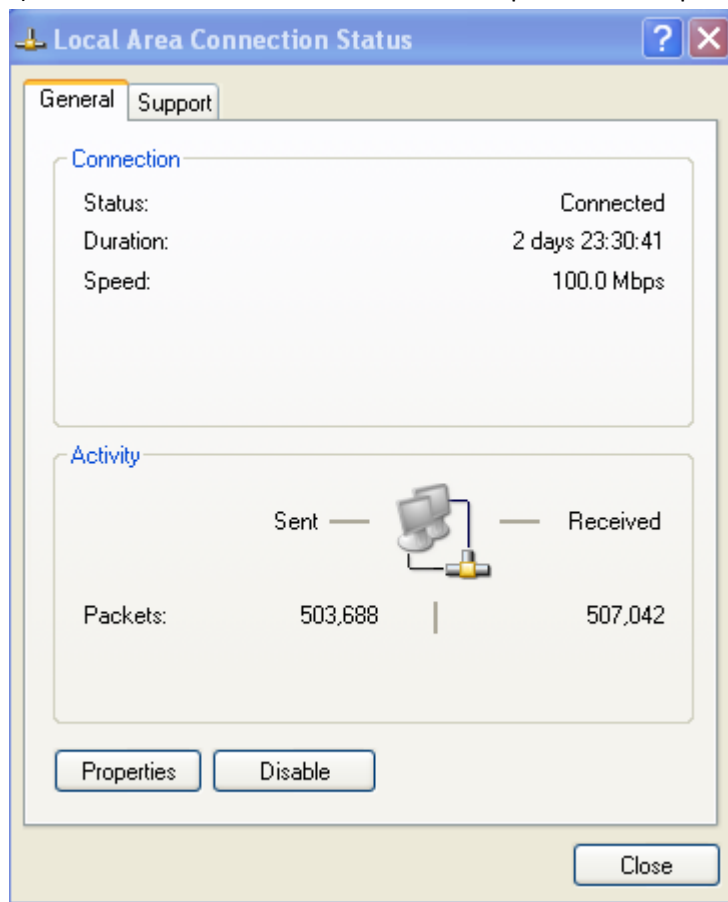
b) Press the "Network Connections" icon.



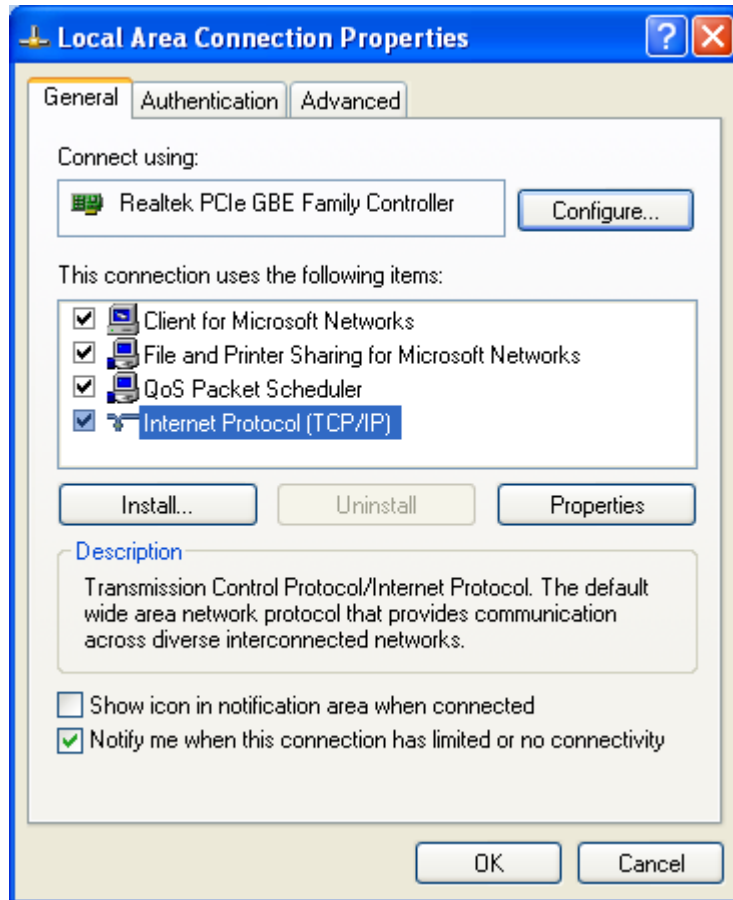
c) Double Click the "Local Area Connection" icon.



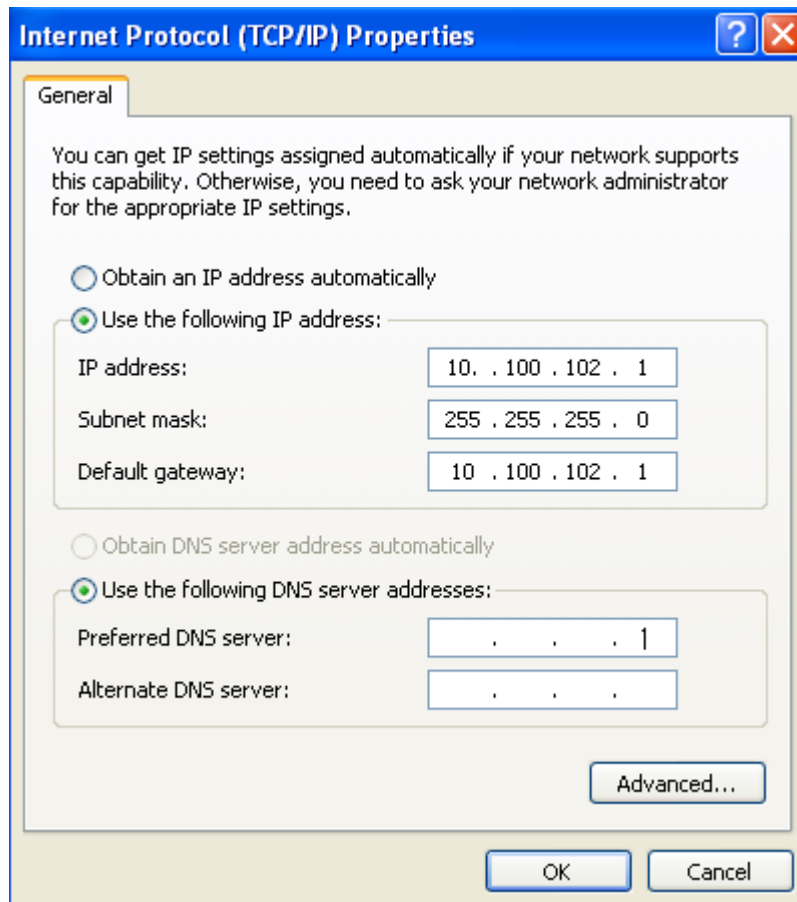
d) On "Local Area Connections" sub menu press the "Properties" icon.



- f) On the "Internet Protocol" press on Properties icon.



- g) Use Static address for this computer. Make sure the last IP character will defer from the static IP on the machine.  
For Example Computer Static IP is : 10.100.102.1 when the FlexTC Static I.P is : 10.100.102.17.



- 6) Set the machine "Static IP" using the FLEXTC "SET IP" located on the manual control window :

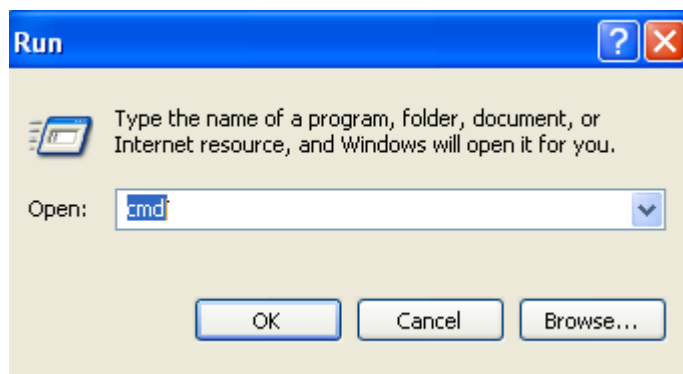


The FLEXTC has a changeable static IP configuration according to the Net server configuration.

For this Example chose:

IP: 10.100.102.17 and GET: 255.255.255.0 and SUB: 10.100.102.17.

- 7) Go to the command line and RUN "cmd" command.



- 8) Use ping command to make sure you got TCP/IP connection.

```

c:\ Command Prompt
Microsoft Windows [Version 5.2.3790]
(C) Copyright 1985-2003 Microsoft Corp.

C:\Documents and Settings\Administrator>ping 10.100.102.17

Pinging 10.100.102.17 with 32 bytes of data:

Reply from 10.100.102.17: bytes=32 time<1ms TTL=128
Reply from 10.100.102.17: bytes=32 time<1ms TTL=128
Reply from 10.100.102.17: bytes=32 time<1ms TTL=128
Reply from 10.100.102.17: bytes=32 time<1ms TTL=128

Ping statistics for 10.100.102.17:
    Packets: Sent = 4, Received = 4, Lost = 0 (0% loss),
    Approximate round trip times in milli-seconds:
        Minimum = 0ms, Maximum = 0ms, Average = 0ms

C:\Documents and Settings\Administrator>_

```

- 9) Run the unzipped MechanicalDevices.exe file using the following instructions on command line or your program application.

**Read command form MI (register cell) :**

c:\release\MechanicalDevices.exe MIXXXX 10.100.102.17 20257

Explanation:

c:\release\MechanicalDevices.exe : MechanicalDevices.exe location of unzipped release.zip file.

MIXXXX : is the register address.

For example MI0699 is the "SET Point" register address.

Attached a complete register address file.

10.10.102.17 : is the static I.P address.

20257 : is the controller port number. Use this number.

```

C:\>c:\release\mechanicaldevices.exe MI0699 10.100.102.17 20257
*****
          Mechanical Devices CLI Version 2.0
*****

Connection established to 10.100.102.17 port 20257
MI-> Reading from address 699
Result =250
Operation Completed

```

**Write command form MI (register cell) :**

c:\release\MechanicalDevices.exe MIXXXX 10.100.102.17 20257 XXXX

Explanation:

c:\release\MechanicalDevices.exe : MechanicalDevices.exe location of unzipped release.zip file.

MIXXXX : is the register address.

For example MI699 is the "SET Point" register address.

Attached a complete register address file.

10.10.102.17 : is the static I.P address.

20257 : is the controller port number. Use this number.

XXXX : is the register value.

```

C:\>c:\release\mechanicaldevices.exe MI0699 10.100.102.17 20257 256
*****
          Mechanical Devices CLI Version 2.0
*****

Connection established to 10.100.102.17 port 20257
MI-> Writing 256 to address 699
Operation Completed

```

**Read command form MB (Boolean cell) :**

c:\release\MechanicalDevices.exe MBXXXX 10.100.102.17 20257

Explanation:

c:\release\MechanicalDevices.exe : MechanicalDevices.exe location of unzipped release.zip file.

MBXXXX : is the Boolean address.

For example MB020 is the "RUN" bit address.

Attached a complete BIT address file.

10.10.102.17 : is the static I.P address.

20257 : is the controller port number.

```

C:\>c:\release\mechanicaldevices.exe MB0020 10.100.102.17 20257
*****
          Mechanical Devices CLI Version 2.0
*****

Connection established to 10.100.102.17 port 20257
MB-> Reading from address 20
Result =0
Operation Completed

C:\>

```

**Write command form MB (Boolean cell) :**

c:\release\MechanicalDevices.exe MBXXXX 10.100.102.17 20257 X

Explanation:

c:\release\MechanicalDevices.exe : MechanicalDevices.exe location of unzipped release.zip file.

MBXXXX : is the Boolean address.

For example MB020 is "RUN" bit address.

10.10.102.17 : is the static I.P address.

20257 : is the controller port number.

X : is 1 or 0

```

C:\>c:\release\mechanicaldevices.exe MB0020 10.100.102.17 20257 0
*****
          Mechanical Devices CLI Version 2.0
*****

Connection established to 10.100.102.17 port 20257
MB-> Writing 0 to address 20
Operation Completed

C:\>

```

10) Please refer to the Register and bit Map for complete parameters address.